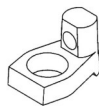


# M22NF SLD A

## SPECIFICATIONS

Nominal Voltage (V)	12V
Capacity at C/100	63Ah
Capacity at C/20	55Ah
Capacity at C/5	46.5 Ah
Weight	37 lbs. (17 kg)
Plate Alloy	Lead Calcium
Posts	Forged Terminals & Bushings
Container/Cover	Polypropylene
Operating Temperature Range	-40°F (-40°C) - 140°F (60°C)
Charge Voltage @ 77°F (25°C)	
Cycle Float	13.8 - 14.6 volts 13.4 - 13.6 volts
Vent	Self-sealing
Terminal	G (T881)



Rated non-spillable by ICAO, IATA and DOT

Made in the U.S.A. by East Penn Manufacturing Co., Inc.

Distributed by:

## Valve-Regulated, Absorbed Glass Mat Technology



## DIMENSIONS

*Inches (mm)*

Length (mm) **9.60 (244 mm)**

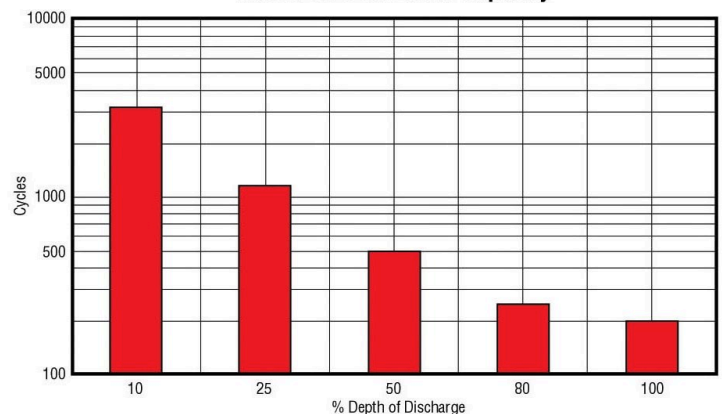
*Including handles*

Width (mm) **5.47 (139 mm)**

Height (mm) **9.24 (235 mm)**

*Including terminals*

**AGM Cycle Life vs Depth of Discharge at +25°C (77°F)  
Based on BCI 2-hour Capacity**



**MK Battery**

1631 South Sinclair Street • Anaheim, California 92806

Toll Free: 800-372-9253 • Fax: 714-937-0818 • E-mail: sales@mkbattery.com

