



12LCP-23

12V 23Ah



Q-Batteries Akku 12LCP-23 battery is a special deep cycle battery which is designed for intensive cyclic discharge usage. Because of the very thick lead plates it's possible to achieve more cycles and longer lifetime.

Application:

Electric wheelchair, caravan/marine, cleaning machines, golf cart, vehicle lifts, solar energy system, u.v.m.

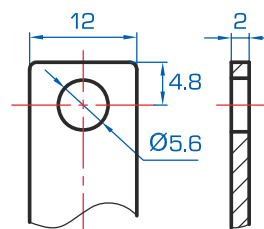
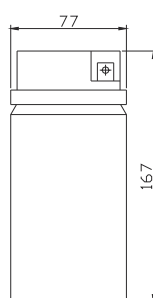
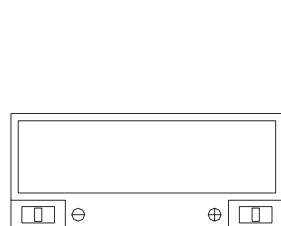
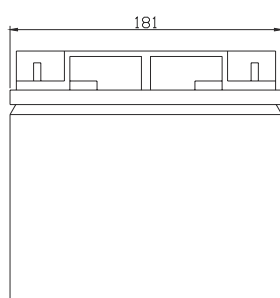


Specification:

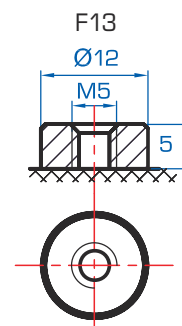
| | | | |
|------------------------------------|---|-----------------------------------|---------------------------|
| Voltage Per Unit | 12 V | | |
| Capacity | 23 Ah | @20hr-rate to 1.8V per cell @25°C | |
| Cells Per Unit | 6 | | |
| Weight | ca. 6 kg +/- 3% | | |
| Max. Discharge Current | 220 A (5 sec.) | | |
| Internal Resistance | ca. 14 m Ω | | |
| Operating Temperature Range Normal | Discharge: - 15°C – 50°C | Charge: - 10°C – 50°C | Storage: - 20°C – 50°C |
| Operating Temperature Range | 25°C ± 5°C | | |
| Self Discharge | Valve Regulated Lead Acid (VRLA) batteries can be stored for more than 6 months at 25°C. Self-discharge ratio less than 3% per month at 25°C. Please charge batteries before using. | | |
| Terminal | F3, F13 | | |
| Container Material | A.B.S. (UL94-HB) | | |

Dimensions:

181 Length x 77 Width x 167 mm Height



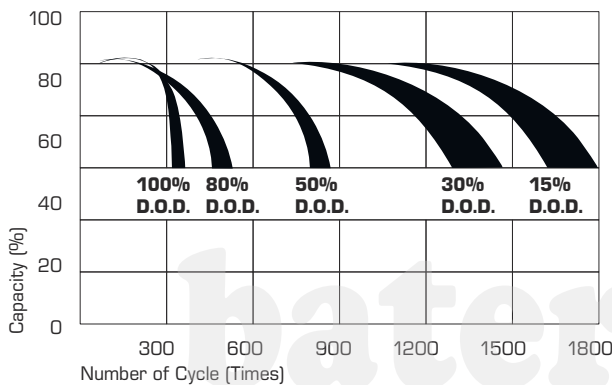
F3 (Anschluss Fahne)



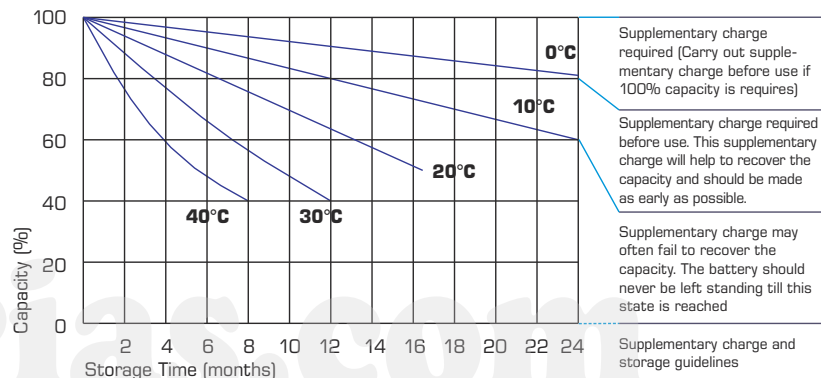
Constant current discharge characteristics: A (25°C)

| FV/Time | 5 Min. | 10 Min. | 15 Min. | 30 Min. | 1 HR | 2 HR | 3 HR | 4 HR | 5 HR | 8 HR | 10 HR | 20 HR |
|---------|--------|---------|---------|---------|-------|------|------|------|------|------|-------|-------|
| 9.60 V | 98.64 | 65.05 | 51.36 | 29.68 | 16.25 | 9.95 | 6.86 | 5.31 | 4.37 | 2.79 | 2.44 | 1.33 |
| 10.0 V | 94.65 | 62.52 | 49.93 | 29.22 | 16.16 | 9.87 | 6.83 | 5.27 | 4.34 | 2.78 | 2.42 | 1.28 |
| 10.2 V | 89.53 | 60.37 | 48.57 | 28.99 | 16.02 | 9.81 | 6.81 | 5.20 | 4.31 | 2.77 | 2.39 | 1.26 |
| 10.5 V | 80.88 | 56.70 | 45.82 | 28.34 | 15.80 | 9.71 | 6.74 | 5.15 | 4.28 | 2.76 | 2.37 | 1.21 |
| 10.8 V | 72.24 | 52.83 | 43.05 | 27.65 | 15.52 | 9.66 | 6.68 | 5.11 | 4.26 | 2.75 | 2.32 | 1.16 |
| 11.1 V | 63.66 | 48.95 | 40.30 | 26.75 | 15.14 | 9.51 | 6.60 | 4.97 | 4.23 | 2.74 | 2.29 | 1.14 |

Life characteristics of cyclic use:



Storage characteristic:



Capacity Factors with different Temperature:

| Battery Type | | -20°C | -10°C | 0°C | 5°C | 10°C | 20°C | 25°C | 30°C | 40°C | 45°C |
|--------------|----------|-------|-------|-----|-----|------|------|------|------|------|------|
| GEL Battery | 6V & 12V | 50% | 70% | 83% | 85% | 90% | 98% | 100% | 102% | 104% | 105% |
| | 2V | 60% | 75% | 85% | 88% | 92% | 99% | 100% | 103% | 105% | 106% |
| AGM Battery | 6V & 12V | 46% | 66% | 76% | 83% | 90% | 98% | 100% | 103% | 107% | 109% |
| | 2V | 55% | 70% | 80% | 85% | 92% | 99% | 100% | 104% | 108% | 110% |

Charging Method:

Charge the batteries at least once every six months, if they are stored at 25°C

| | |
|----------------------|---|
| Constant Voltage (V) | -0.2C x 2h + 2.4-2.45V/Cell x 24h, max. Current 0.3CA |
| Constant Current (A) | -0.2C x 2h + 0.1CA x 12h |
| Fast | -0.2C x 2h + 0.3CA x 4.0h |