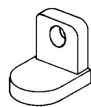


# MU-1 SLD G

## SPECIFICATIONS

|                              |  |
|------------------------------|--|
| Nominal Voltage (V)          | 12V                                    |
| Capacity at C/100            | 36 Ah                                  |
| Capacity at C/20             | 31.6 Ah                                |
| Capacity at C/5              | 26.8 Ah                                |
| Weight                       | 23.5 lbs. (11 kg)                      |
| Plate Alloy                  | Lead Calcium                           |
| Posts                        | Forged Terminals & Bushings            |
| Container/Cover              | Polypropylene                          |
| Operating Temperature Range  | -76°F (-60°C) - 140°F (60°C)           |
| Charge Voltage @ 77°F (25°C) |  |
| Cycle Float                  | 13.8 - 14.6 volts<br>13.4 - 13.6 volts |
| Vent                         | Self-sealing                           |
| Electrolyte                  | Sulfuric acid thixotropic gel          |
| Terminal                     | Y (T873)                               |



Rated non-spillable by ICAO, IATA and DOT

Made in the U.S.A. by East Penn Manufacturing Co, Inc.

## Valve-Regulated, Gelled-Electrolyte Battery

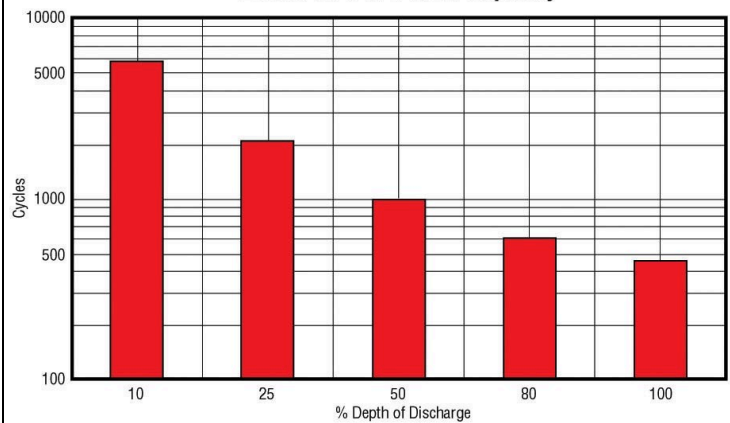


## DIMENSIONS

*Inches (mm)*

|        |  |
|--------|--|
| Length | 7.71 (196 mm)                              |
| Width  | 5.18 (132 mm)                              |
| Height | 7.22 (183 mm)<br><i>Including terminal</i> |

**Gel Cycle Life vs Depth of Discharge at +25°C (77°F)  
Based on BCI 2-hour Capacity**



**MK Battery**

1631 South Sinclair Street • Anaheim, California 92806

Toll Free: 800-372-9253 • Fax: 714-937-0818 • E-mail: sales@mkbattery.com

