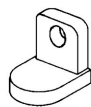


# MU-1 SLD G

## SPECIFICATIONS

Nominal Voltage (V)	12V
Capacity at C/100	36 Ah
Capacity at C/20	31.6 Ah
Capacity at C/5	26.8 Ah
Weight	23.5 lbs. (11 kg)
Plate Alloy	Lead Calcium
Posts	Forged Terminals & Bushings
Container/Cover	Polypropylene
Operating Temperature Range	-76°F (-60°C) - 140°F (60°C)
Charge Voltage @ 77°F (25°C)	
Cycle Float	13.8 - 14.6 volts 13.4 - 13.6 volts
Vent	Self-sealing
Electrolyte	Sulfuric acid thixotropic gel
Terminal	Y (T873)



Rated non-spillable by ICAO, IATA and DOT

Made in the U.S.A. by East Penn Manufacturing Co, Inc.

## Valve-Regulated, Gelled-Electrolyte Battery

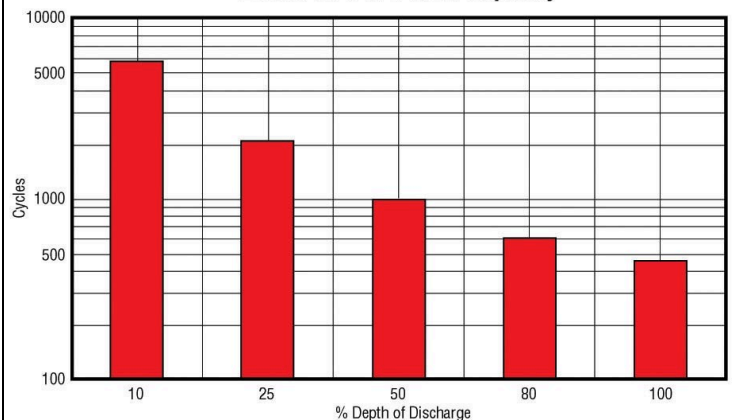


## DIMENSIONS

*Inches (mm)*

Length	7.71 (196 mm)
Width	5.18 (132 mm)
Height	7.22 (183 mm) <i>Including terminal</i>

**Gel Cycle Life vs Depth of Discharge at +25°C (77°F)  
Based on BCI 2-hour Capacity**



**MK Battery**

1631 South Sinclair Street • Anaheim, California 92806

Toll Free: 800-372-9253 • Fax: 714-937-0818 • E-mail: sales@mkbattery.com

