

ODYSSEY[®] BATTERY

ODP-AGM31 (31-925S)

Technical Data Sheet

Battery Type

AGM with Thin Plate Pure Lead (TPPL). Advanced dual-purpose battery for engine start and deep-cycle use

Power & Performance

Voltage	12V
Capacity (20-hour rate)	100Ah
Capacity (10-hour rate)	92Ah
Cold Cranking Amps (CCA, SAE J537)	925A
PHCA - 5-second pulse current	1750A
HCA	1325A
MCA	1150A
Reserve capacity	200 mins
Short circuit current (using IEC method)	2600A
Internal resistance at 20°C (using IEC method)	2.6 mΩ

Dimensions & Weight

Length	330 mm
Width	173 mm
Height (to top of terminals)	244 mm
Height Container	218 mm
Weight	31.5 kg

Temperature

Operating Temperature Range	-40°C to +60°C
Optimum Storage Temperature	+20°C

Accreditations

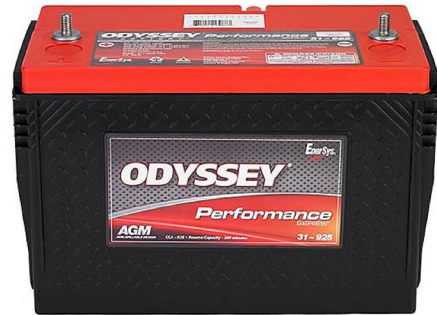
The management systems governing the manufacture of this product are ISO 9001 and ISO 14001 certified.

Charging & self-discharge

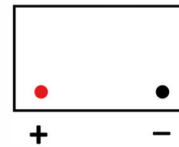
Type of charging curve	IUU
Charge voltage @+20°C	14.4V to 14.8V
Self-discharge per month at +20°C	1.25%
Self-discharge per month at +40°C	5%

Fitting, handling & storage

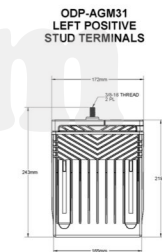
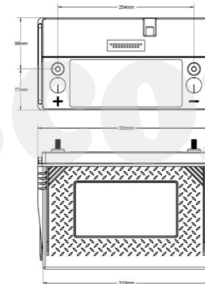
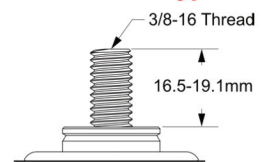
Can be mounted or stored in any orientation except inverted.
2-years storage life at +20°C without charging, or until the Open Circuit Voltage (OCV) is <12.6V or <2.10Vpc, whichever occurs first.
Classified as non-spillable and approved as non-hazardous cargo for ground, sea and air transportation in accordance with the requirements of IMDG (International Maritime code for dangerous Goods) and ICAO (International Civil Aviation Organisation).



Terminal Position



Terminal Type



PDF Generated at <https://eu.odysseybattery.com> 16/11/2021 12:39:38
Information correct at time of exporting PDF. Please check website for updates.



EnerSys World Headquarters
2366 Bernville Road
Reading, PA 19605, USA
Tel: +1-610-208-1991 /
+1-800-538-3627

EnerSys EMEA
EH Europe GmbH
Baarerstrasse 18
6300 Zug,
Switzerland

EnerSys Asia
152 Beach Road
Gateway East Building #11-08
Singapore 189721
Tel: +65 6508 1780