



12LS-55

12 V 55 Ah

Design lifetime: 10 years



Q-Batteries 12LS-55 is an AGM battery, which is designed for standby applications such as fire-detecting-systems, UPS or burglar-systems.

Application:

UPS, security- and telecommunication systems etc.

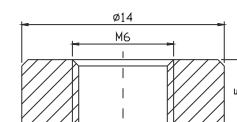
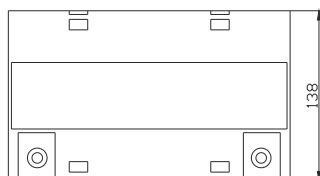
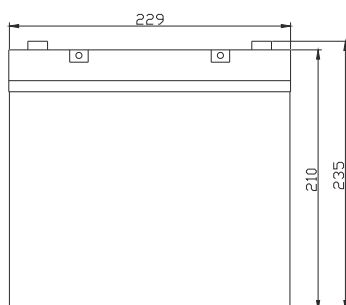


Specification:

Voltage Per Unit	12 V		
Capacity	55 Ah	@10hr-rate to 1.8V per cell @25°C	
Cells Per Unit	6		
Weight	ca. 18 kg +/- 3%		
Max. Discharge Current	550 A (5 sec.)		
Internal Resistance	ca. 6m Ω		
Operating Temperature Range Normal	Discharge: - 15°C – 50°C	Charge: -10°C – 50°C	Storage: - 20°C – 50°C
Operating Temperature Range	25°C ± 5°C		
Self Discharge	Valve Regulated Lead Acid (VRLA) batteries can be stored for more than 6 months at 25°C. Self-discharge ratio less than 3% per month at 25°C. Please charge batteries before using.		
Terminal	F11 (M6 bolt)		
Container Material	A.B.S. (UL94-HB)		

Dimensions:

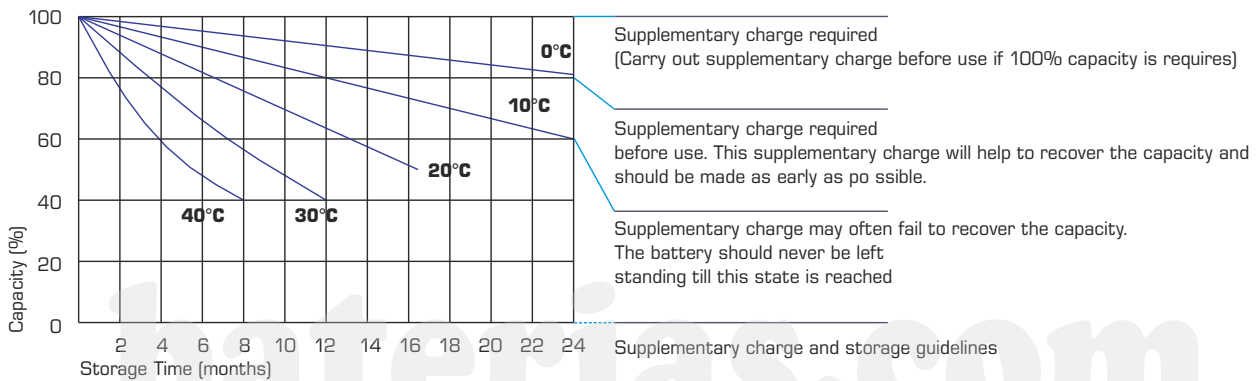
229 Length x 138 Width x 235 mm Height



Constant current discharge characteristics: A (25°C)

F.V/Time	5 Min.	10 Min.	15 Min.	30 Min.	1 HR	2 HR	3 HR	4 HR	5 HR	8 HR	10 HR	20 HR
9.60V	184.3	135.7	105.8	64.46	35.75	21.38	14.76	12.23	10.30	7.033	5.833	3.113
10.0V	179.0	129.1	103.6	63.34	35.59	21.22	14.71	12.17	10.24	6.976	5.777	3.056
10.2V	173.7	124.5	101.97	62.17	35.26	21.06	14.59	12.12	10.17	6.919	5.721	2.999
10.5V	155.9	114.9	97.09	61.70	34.93	20.90	14.54	12.00	10.05	6.861	5.665	2.943
10.8V	140.7	104.8	89.50	60.65	34.10	20.52	14.14	11.72	9.872	6.747	5.609	2.886
11.1V	120.2	93.7	80.28	56.78	32.40	19.61	13.52	11.15	9.448	6.461	5.441	2.716

Storage characteristic:



Capacity Factors with different Temperature:

Battery Type		-20°C	-10°C	0°C	5°C	10°C	20°C	25°C	30°C	40°C	45°C
GEL Battery	6V & 12V	50%	70%	83%	85%	90%	98%	100%	102%	104%	105%
	2V	60%	75%	85%	88%	92%	99%	100%	103%	105%	106%
AGM Battery	6V & 12V	46%	66%	76%	83%	90%	98%	100%	103%	107%	109%
	2V	55%	70%	80%	85%	92%	99%	100%	104%	108%	110%

Charging Method:

Charge the batteries at least once every six months, if they are stored at 25°C

Constant Voltage (V)	-0.2C x 2h + 2.4-2.45V/Cell x 24h, max. Current 0.3CA
Constant Current (A)	-0.2C x 2h + 0.1CA x 12h
Fast	-0.2C x 2h + 0.3CA x 4.0h