

ODYSSEY[®] BATTERY

ODS-AGM16LMJ (PC680MJ)

Technical Data Sheet

Battery Type

AGM with Thin Plate Pure Lead (TPPL). Advanced dual-purpose battery for engine start and deep-cycle use



Power & Performance

Voltage	12V
Capacity (20-hour rate)	16Ah
Capacity (10-hour rate)	16Ah
Cold Cranking Amps (CCA, SAE J537)	170A
PHCA - 5-second pulse current	520A
HCA	350A
MCA	280A
Reserve capacity	24 mins
Short circuit current (using IEC method)	1800A
Internal resistance at 20°C (using IEC method)	7 mΩ

Dimensions & Weight

Length	185 mm
Width	79 mm
Height (to top of terminals)	163 mm
Height Container	170 mm
Weight	7.5 kg

Temperature

Operating Temperature Range	-40°C to +80°C
Optimum Storage Temperature	+20°C

Accreditations

The management systems governing the manufacture of this product are ISO 9001 and ISO 14001 certified.

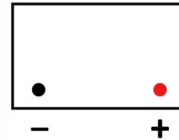
Charging & self-discharge

Type of charging curve	IUU
Charge voltage @+20°C	14.4V to 14.8V
Self-discharge per month at +20°C	1.25%
Self-discharge per month at +40°C	5%

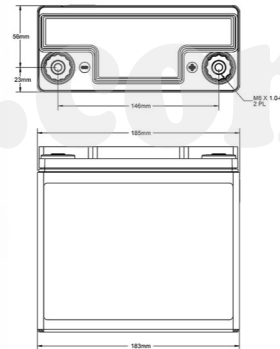
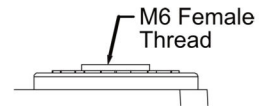
Fitting, handling & storage

Can be mounted or stored in any orientation except inverted. 2-years storage life at +20°C without charging, or until the Open Circuit Voltage (OCV) is <12.6V or <2.10Vpc, whichever occurs first. Classified as non-spillable and approved as non-hazardous cargo for ground, sea and air transportation in accordance with the requirements of IMDG (International Maritime code for dangerous Goods) and ICAO (International Civil Aviation Organisation).

Terminal Position



Terminal Type



ODS-AGM16LMJ
RIGHT POSITIVE
FEMALE
CONNECTION

Metal Jacket

PDF Generated at <https://eu.odysseybattery.com> 16/11/2021 12:47:59
Information correct at time of exporting PDF. Please check website for updates.



EnerSys World Headquarters
2366 Bernville Road
Reading, PA 19605, USA
Tel: +1-610-208-1991 /
+1-800-538-3627

EnerSys EMEA
EH Europe GmbH
Baarerstrasse 18
6300 Zug,
Switzerland

EnerSys Asia
152 Beach Road
Gateway East Building #11-08
Singapore 189721
Tel: +65 6508 1780