



12LS-55

12 V 55 Ah

Design lifetime: 10 years



Q-Batteries 12LS-55 is an AGM battery, which is designed for standby applications such as fire-detecting-systems, UPS or burglar-systems.

Application:

UPS, security- and telecommunication systems etc.

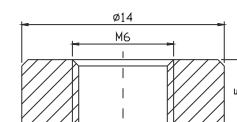
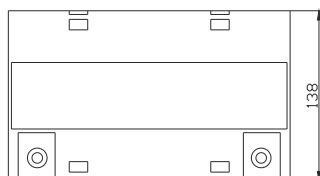
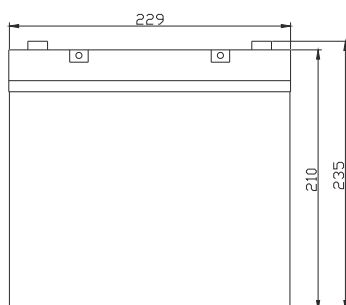


Specification:

| | | | |
|------------------------------------|---|-----------------------------------|---------------------------|
| Voltage Per Unit | 12 V | | |
| Capacity | 55 Ah | @10hr-rate to 1.8V per cell @25°C | |
| Cells Per Unit | 6 | | |
| Weight | ca. 18 kg +/- 3% | | |
| Max. Discharge Current | 550 A (5 sec.) | | |
| Internal Resistance | ca. 6m Ω | | |
| Operating Temperature Range Normal | Discharge: - 15°C – 50°C | Charge: -10°C – 50°C | Storage: - 20°C – 50°C |
| Operating Temperature Range | 25°C ± 5°C | | |
| Self Discharge | Valve Regulated Lead Acid (VRLA) batteries can be stored for more than 6 months at 25°C. Self-discharge ratio less than 3% per month at 25°C. Please charge batteries before using. | | |
| Terminal | F11 (M6 bolt) | | |
| Container Material | A.B.S. (UL94-HB) | | |

Dimensions:

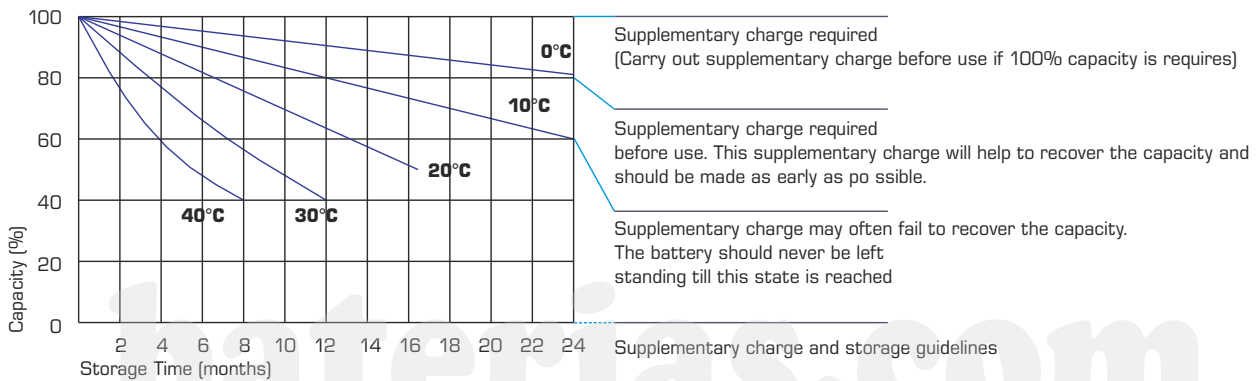
229 Length x 138 Width x 235 mm Height



Constant current discharge characteristics: A (25°C)

| F.V/Time | 5 Min. | 10 Min. | 15 Min. | 30 Min. | 1 HR | 2 HR | 3 HR | 4 HR | 5 HR | 8 HR | 10 HR | 20 HR |
|----------|--------|---------|---------|---------|-------|-------|-------|-------|-------|-------|-------|-------|
| 9.60V | 184.3 | 135.7 | 105.8 | 64.46 | 35.75 | 21.38 | 14.76 | 12.23 | 10.30 | 7.033 | 5.833 | 3.113 |
| 10.0V | 179.0 | 129.1 | 103.6 | 63.34 | 35.59 | 21.22 | 14.71 | 12.17 | 10.24 | 6.976 | 5.777 | 3.056 |
| 10.2V | 173.7 | 124.5 | 101.97 | 62.17 | 35.26 | 21.06 | 14.59 | 12.12 | 10.17 | 6.919 | 5.721 | 2.999 |
| 10.5V | 155.9 | 114.9 | 97.09 | 61.70 | 34.93 | 20.90 | 14.54 | 12.00 | 10.05 | 6.861 | 5.665 | 2.943 |
| 10.8V | 140.7 | 104.8 | 89.50 | 60.65 | 34.10 | 20.52 | 14.14 | 11.72 | 9.872 | 6.747 | 5.609 | 2.886 |
| 11.1V | 120.2 | 93.7 | 80.28 | 56.78 | 32.40 | 19.61 | 13.52 | 11.15 | 9.448 | 6.461 | 5.441 | 2.716 |

Storage characteristic:



Capacity Factors with different Temperature:

| Battery Type | | -20°C | -10°C | 0°C | 5°C | 10°C | 20°C | 25°C | 30°C | 40°C | 45°C |
|--------------|----------|-------|-------|-----|-----|------|------|------|------|------|------|
| GEL Battery | 6V & 12V | 50% | 70% | 83% | 85% | 90% | 98% | 100% | 102% | 104% | 105% |
| | 2V | 60% | 75% | 85% | 88% | 92% | 99% | 100% | 103% | 105% | 106% |
| AGM Battery | 6V & 12V | 46% | 66% | 76% | 83% | 90% | 98% | 100% | 103% | 107% | 109% |
| | 2V | 55% | 70% | 80% | 85% | 92% | 99% | 100% | 104% | 108% | 110% |

Charging Method:

Charge the batteries at least once every six months, if they are stored at 25°C

| | |
|----------------------|---|
| Constant Voltage (V) | -0.2C x 2h + 2.4-2.45V/Cell x 24h, max. Current 0.3CA |
| Constant Current (A) | -0.2C x 2h + 0.1CA x 12h |
| Fast | -0.2C x 2h + 0.3CA x 4.0h |