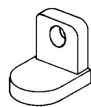


MU-1 SLD G

SPECIFICATIONS

| | |
|------------------------------|--|
| Nominal Voltage (V) | 12V |
| Capacity at C/100 | 36 Ah |
| Capacity at C/20 | 31.6 Ah |
| Capacity at C/5 | 26.8 Ah |
| Weight | 23.5 lbs. (11 kg) |
| Plate Alloy | Lead Calcium |
| Posts | Forged Terminals & Bushings |
| Container/Cover | Polypropylene |
| Operating Temperature Range | -76°F (-60°C) - 140°F (60°C) |
| Charge Voltage @ 77°F (25°C) | |
| Cycle Float | 13.8 - 14.6 volts 13.4 - 13.6 volts |
| Vent | Self-sealing |
| Electrolyte | Sulfuric acid thixotropic gel |
| Terminal | Y (T873) |



Rated non-spillable by ICAO, IATA and DOT

Made in the U.S.A. by East Penn Manufacturing Co, Inc.

Valve-Regulated, Gelled-Electrolyte Battery

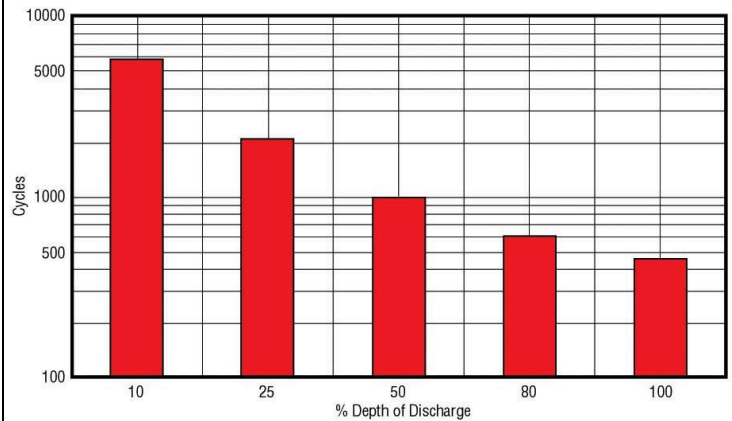


DIMENSIONS

Inches (mm)

| | |
|--------|--|
| Length | 7.71 (196 mm) |
| Width | 5.18 (132 mm) |
| Height | 7.22 (183 mm) <i>Including terminal</i> |

**Gel Cycle Life vs Depth of Discharge at +25°C (77°F)
Based on BCI 2-hour Capacity**



MK Battery

1631 South Sinclair Street • Anaheim, California 92806

Toll Free: 800-372-9253 • Fax: 714-937-0818 • E-mail: sales@mkbattery.com

